



M. B. MORE FOUNDATION'S ARTS, COMMERCE & SCIENCE WOMEN COLLEGE

Affiliated to Mumbai University

Founder & President : Hon. Mr. Vijayrao Mahadevrao More

ESTD 2012

Outward No.

Date :

Facilities for women on the campus

Gate 1



Gate 2



Compound wall



[Signature]
I/C PRINCIPAL
M.B. More Foundation's
Art's, Com., Science Women College
ALPo. Dhatav, Tal.-Roha, Dist.-Raigad.

Waiting lounge



Common Room (Students)



[Signature]
I/C PRINCIPAL
M.B. More Foundation's
Art's, Com., Science Women College
ALPo. Dhatav, Tal. Roha, Dist. Raigad.

Common Room (staff)

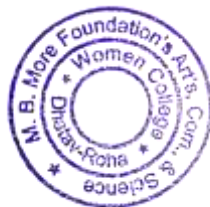
Staff room 1



Staff room 2



Security in-charge on 24 × 7 duty



[Signature]
I/C PRINCIPAL
M.B. More Foundation's
Art's, Com., Science Women College
ALPo. Dhatav, Tal.-Roha, Dist.-Raigad.

Washroom (Girls)



Sanitary Napkin Vending Machine



Fire Extinguisher



[Signature]
I/C PRINCIPAL
M.B. More Foundation's
Art's, Com., Science Women College
ALPo. Dhatav, Tal.-Roha, Dist.-Raigad.

CCTV cameras



Entrance 1



Entrance 2



Staff Room



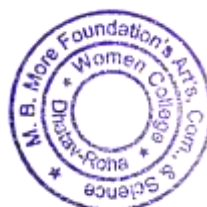
Computer lab



Passage (Gr floor)



Library

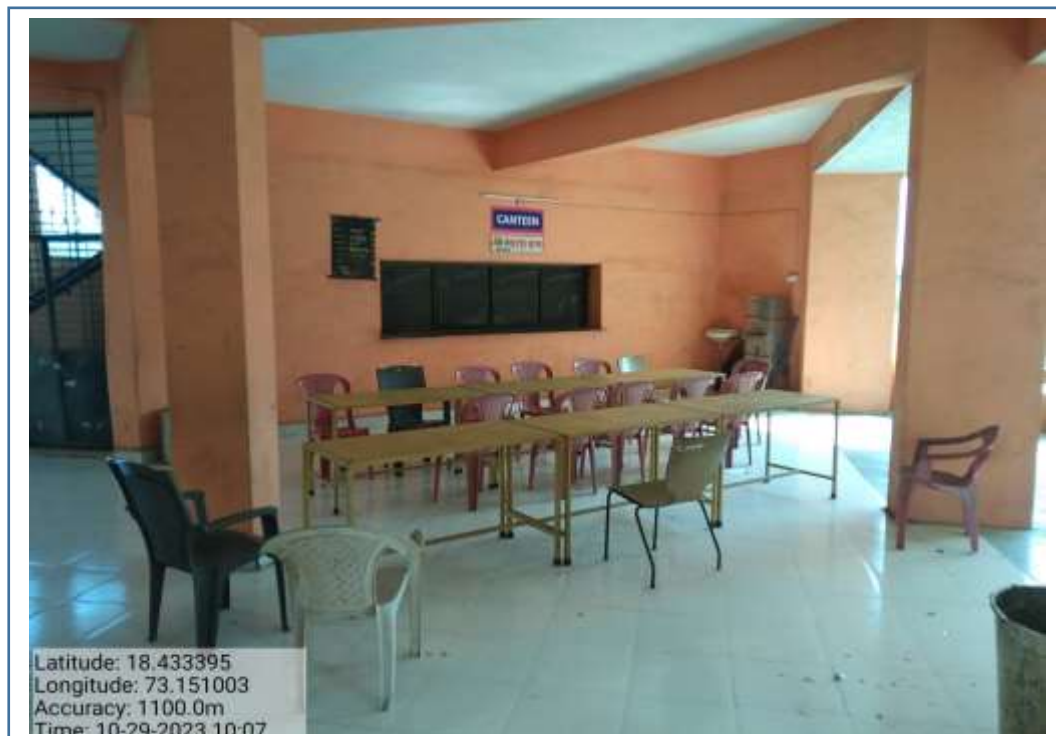


[Handwritten Signature]
I/C PRINCIPAL
M.B. More Foundation's
Art's, Com., Science Women College
ALPo. Dhatav, Tal.-Roha, Dist.-Raigad.

CCTV monitor



Canteen



[Handwritten Signature]
I/C PRINCIPAL
M.B. More Foundation's
Art's, Com., Science Women College
ALPo. Dhatav, Tal.-Roha, Dist.-Raigad.